

Contrec-USA, LLC

916 Belcher Drive
Pelham, AL 35124
Phone: (205) 685-3000
Fax: (205) 685-3001
Email: contrec@contrec-usa.com
Web: www.contrec.net

ADDENDUM

contrec model 202D with EB enclosure mounting

version 1.20 July 16, 2004

ADDENDUM

PURPOSE

This document is an addendum to the Contrec model 202D Field Mounted Rate Totalizer Operation Manual. This addendum applies to any model 202D mounted in the EB explosion proof enclosure. The model numbers for instruments which require this addendum are as follows:

- 202D.90
- 202D.93
- 202D.94

CHANGES TO THE MANUAL

- The front panel of the 202D can no longer be accessed when mounted in the EB enclosure. The instrument must be programmed using the two external pushbuttons and the program mode selector switch. This will be explained later in this document.
- On page 3 of the 202D Operation Manual, under mounting options, the following should be added:

9 Explosion proof EB enclosure
- On page 7, all **Physical** information is replaced with the following information:

Temperature:	-20° C to 60° C (4° F to 140° F) without heater option. -40° C to 60° C (-40° F to 140° F) with heater option.
Protection:	NEMA 7 (explosion proof) and NEMA 4X (weatherproof)
Enclosure Material:	Cast Aluminum
Dimensions:	<i>see Figure 4.</i>
- On page 8, the information at the bottom of the page that describes the functions of the keys on front of the 202D does not apply.
- On page 9, the first sentence should now read, “The 202D has a Test Mode which can be entered by simultaneously pressing both the left and right pushbuttons”. Low Test mode is accessed by rotating the left pushbutton to the up position and pressing the left pushbutton. The High Test mode is accessed by rotating the left pushbutton to the down position and pressing the left pushbutton. The Display Test is accessed by pushing the right pushbutton. The last sentence on page 9 should now read, “To exit Test Mode, press both the left and right pushbuttons simultaneously”.
- Disregard all information on page 15 that describes how to enter the program mode. Information on entering the program mode will be discussed in this document.
- On page 20, the following should be added to the mounting options:

9 Explosion proof EB enclosure
- Installation information on pages 37, 38, 39, and 40 does not apply.

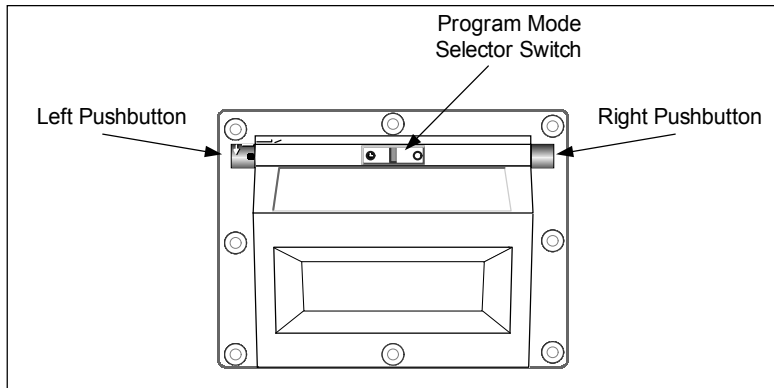


Figure 1 Switch Locations

PROGRAMMING

The program mode selector switch is located top center of the front of the enclosure. To enter the Program Mode, remove the two screws in the access plate around the switch, remove the access plate, and rotate the selector switch 90° clockwise to the program position.

After the program mode selector switch has been placed in the program position, CAL 0 will appear on the display. The two pushbuttons can then be used to enter the programming information into the 202D.

Pushbutton description

Left Pushbutton

The left pushbutton functions as two switches and moves in two axes. The left-right axis (pushing the button) is used to change and increment the flashing digits. This pushbutton can also be rotated 90°.

Pressing the left pushbutton will either move the cursor to the right one digit or increment the flashing digit. The function of this pushbutton is determined by the rotational position (0° or 90°).

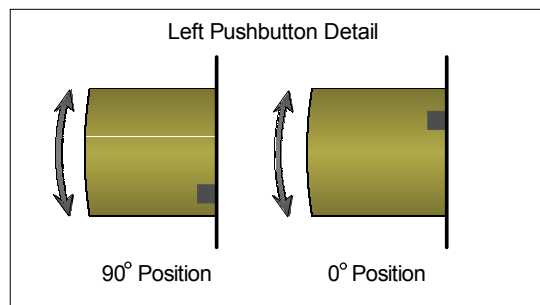


Figure 2 Left Pushbutton Detail

Right Pushbutton

The right pushbutton only moves in one axis. Pressing the right pushbutton saves the displayed CAL step and moves to next CAL step.

Section 4.1 of the 202D Operation Manual describes the function of the CAL steps and how to program them.

OPTIONS

An optional heater can be installed which requires a 12 Vdc supply. The heating element is a transparent strip that is attached directly onto the LCD display of the 202D. The heating element is connected to a temperature controller that monitors the element and activates it as needed.

The heater will have two unconnected wires that must be connected to a dc supply. The heater can either be connected in parallel with the supply input to the 202D or connected to a separate dc supply. The following diagram shows the correct connections.

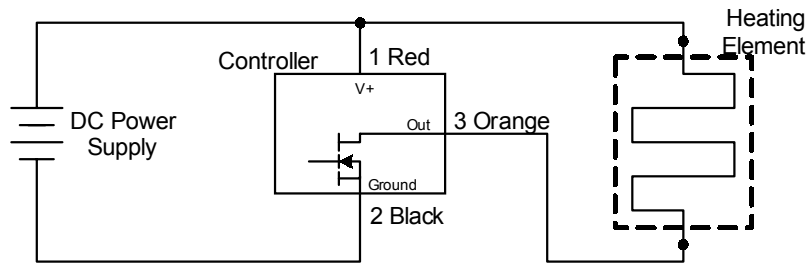


Figure 3 Heater Wiring

DIMENSIONS

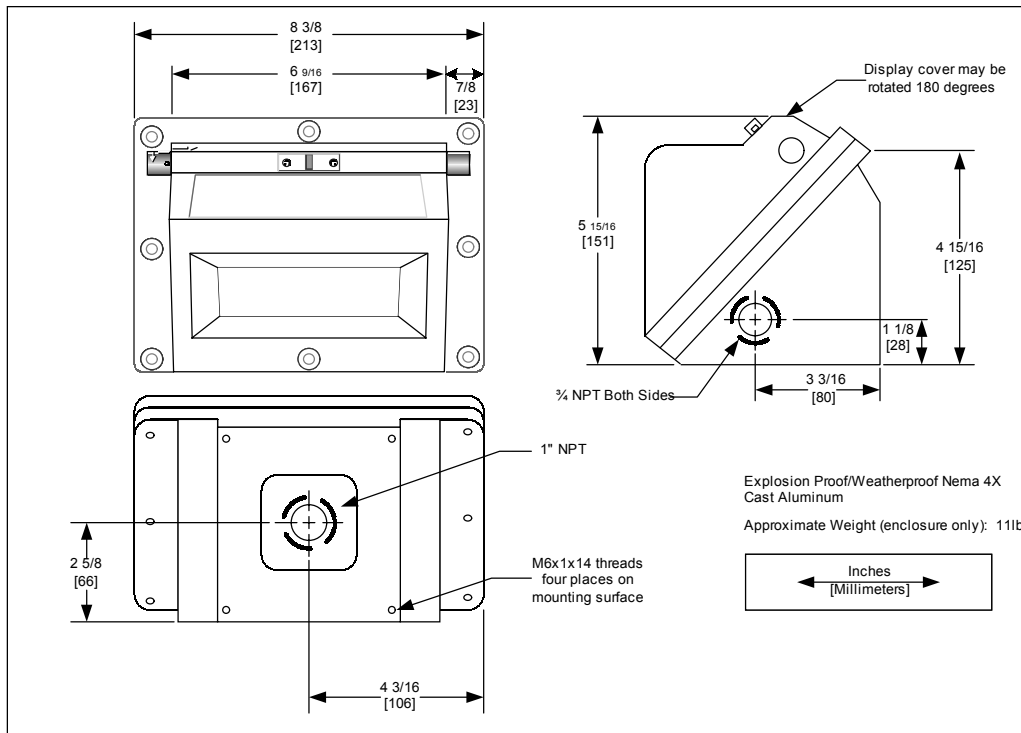


Figure 4 Dimensions